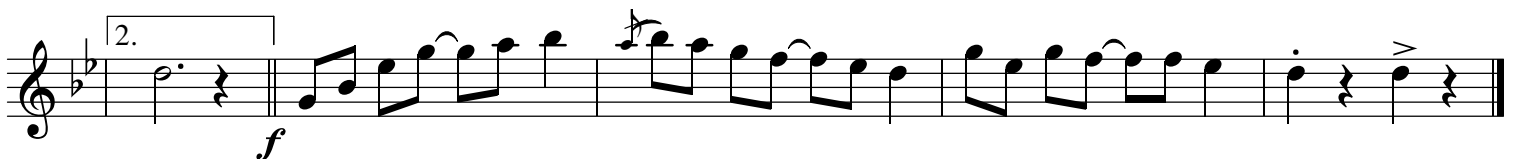
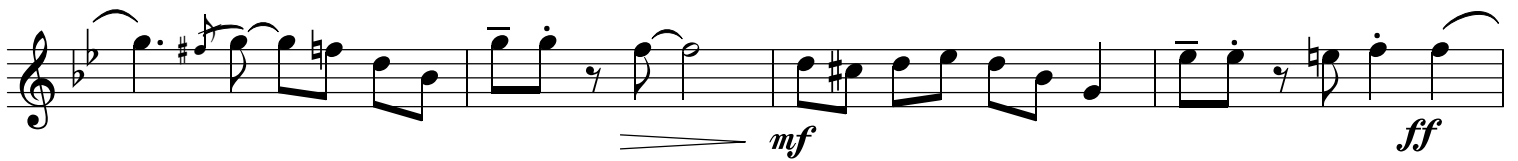
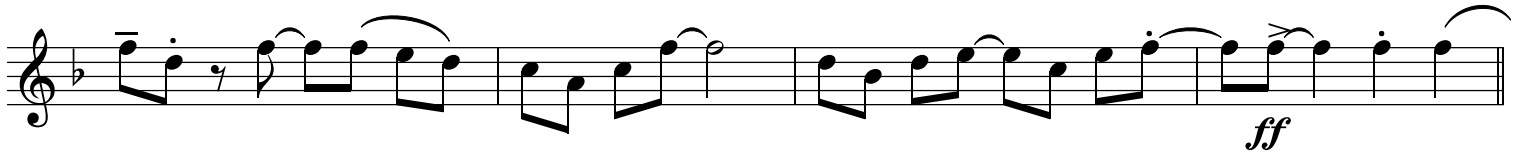
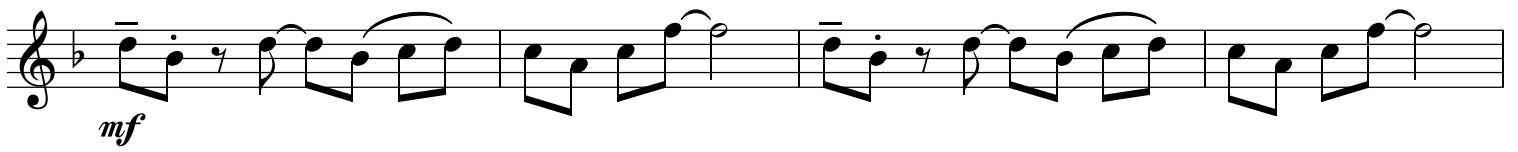
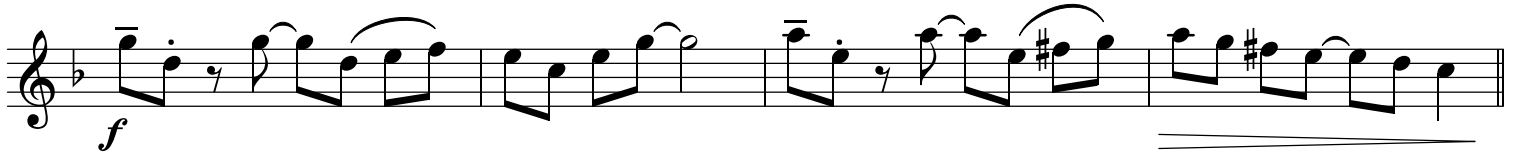




T=108



3

T=108

mf

f

mf

mf *ff*

mf *ff*

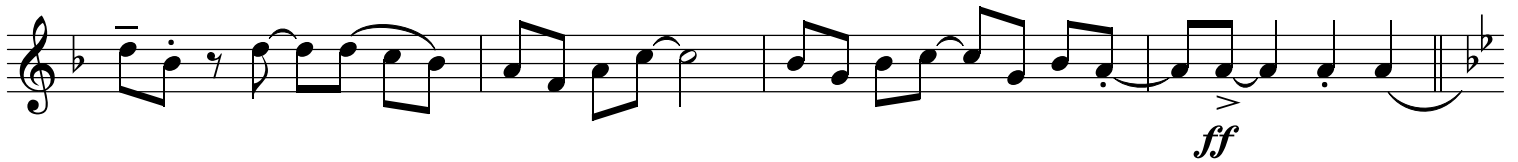
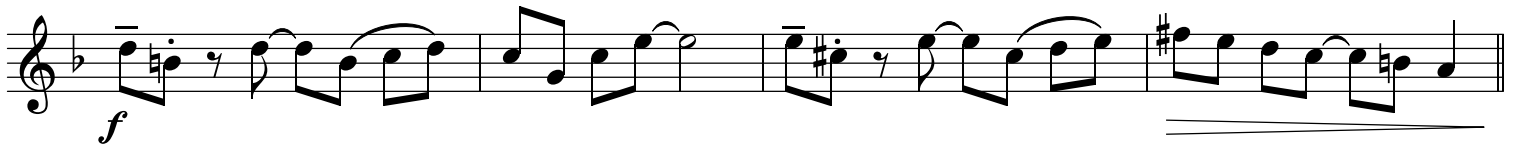
mf

f

f



T=108



Musical notation for the first staff, featuring a triplet of eighth notes.

T=108

Musical notation for the second staff, starting with a repeat sign and a mezzo-forte (*mf*) dynamic.

Musical notation for the third staff, featuring a forte (*f*) dynamic.

Musical notation for the fourth staff, featuring a mezzo-forte (*mf*) dynamic.

Musical notation for the fifth staff, ending with a fortissimo (*ff*) dynamic.

Musical notation for the sixth staff, with dynamic markings of mezzo-forte (*mf*) and fortissimo (*ff*).

Musical notation for the seventh staff, with dynamic markings of mezzo-forte (*mf*) and fortissimo (*ff*).

Musical notation for the eighth staff, featuring a mezzo-forte (*mf*) dynamic.

Musical notation for the ninth staff, featuring a forte (*f*) dynamic and a first ending bracket.

Musical notation for the tenth staff, featuring a forte (*f*) dynamic and a second ending bracket.

Tuba B

Blues for Sarah

v. Hugo Feßler



T=108



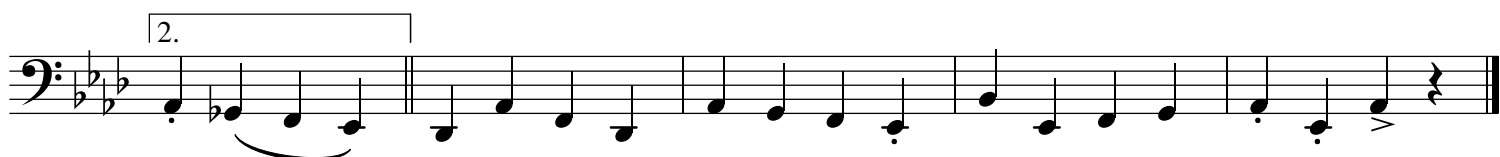
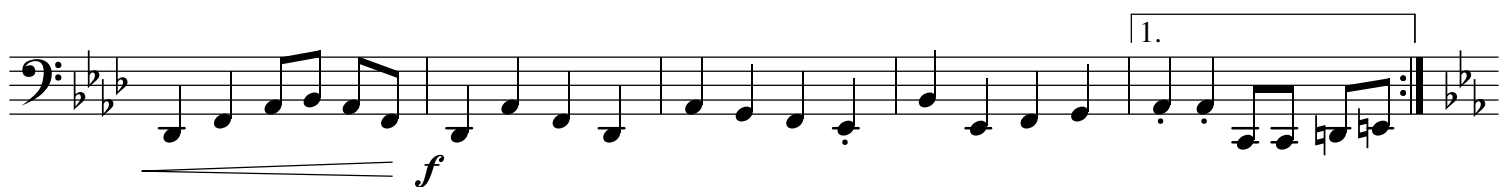
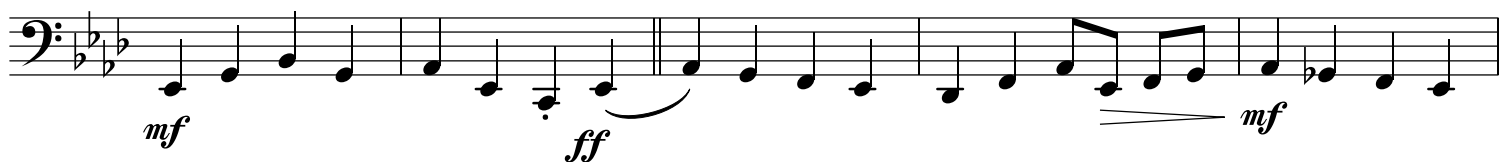
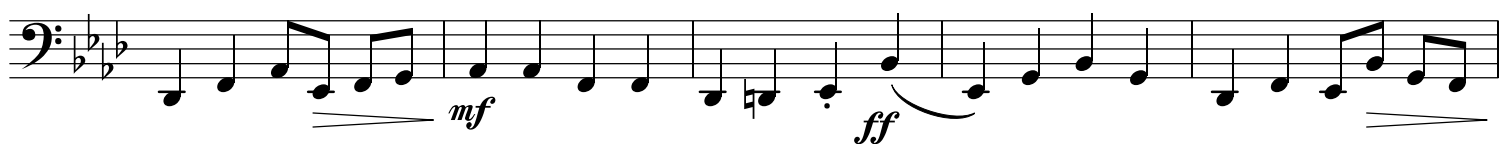
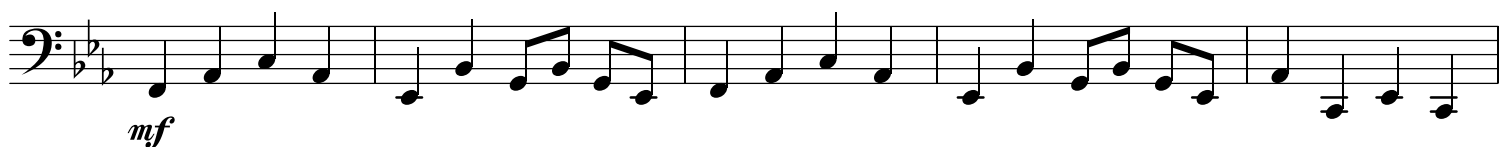
Tuba C

Blues for Sarah

v. Hugo Feßler

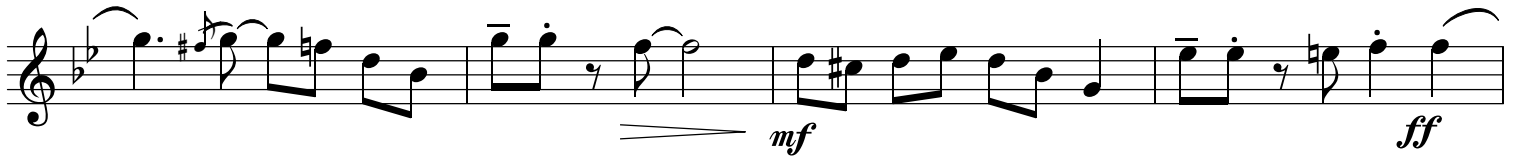
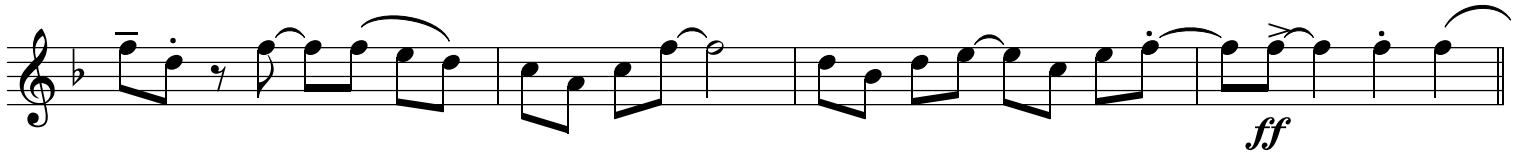
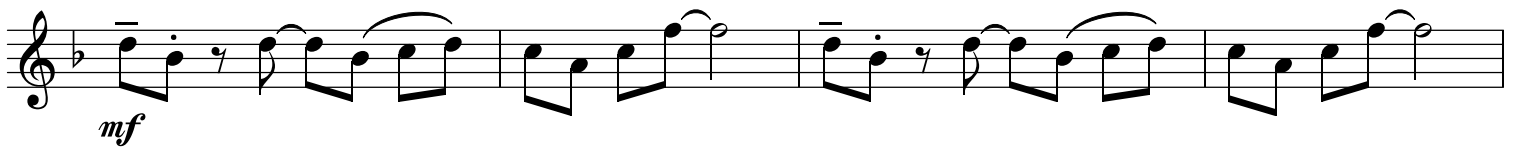
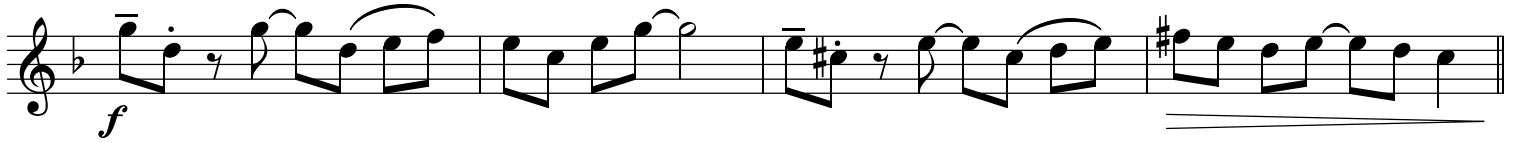
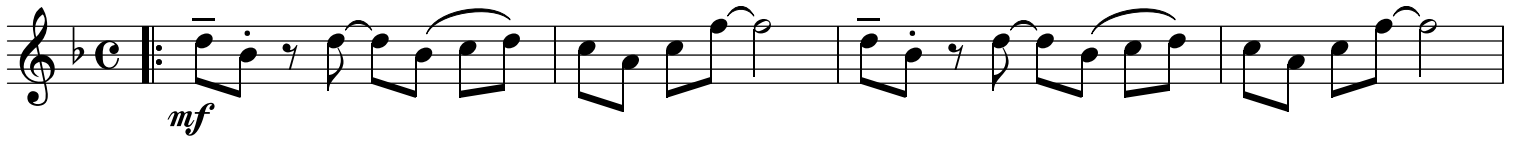


T=108



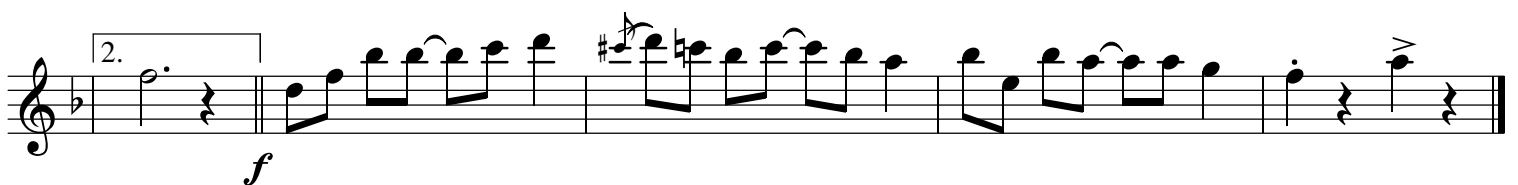
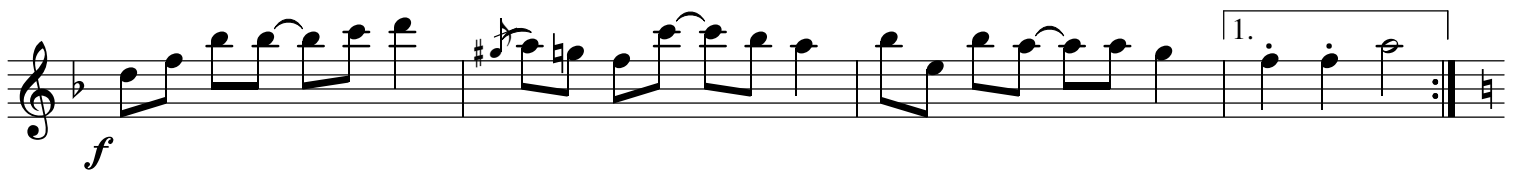
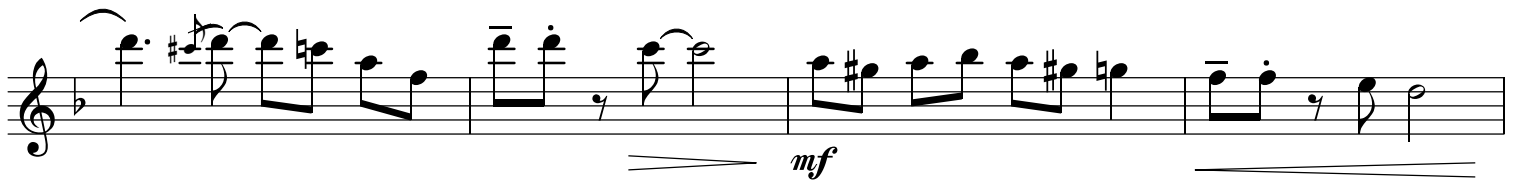
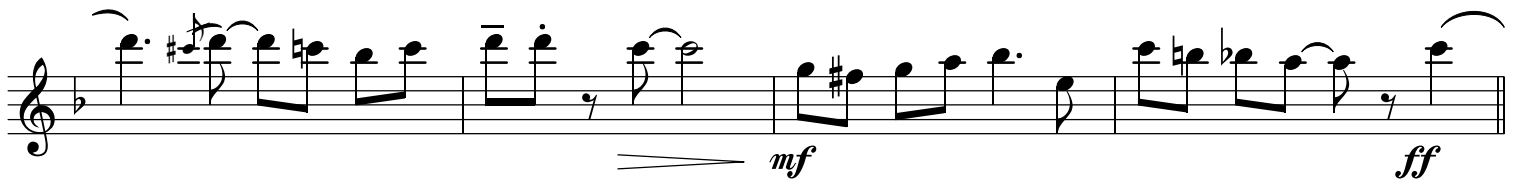
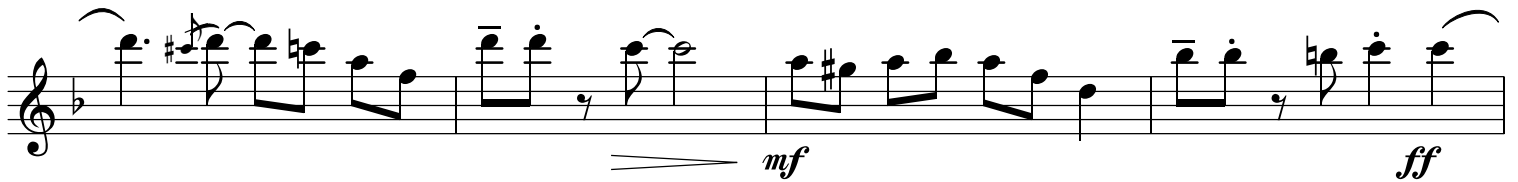
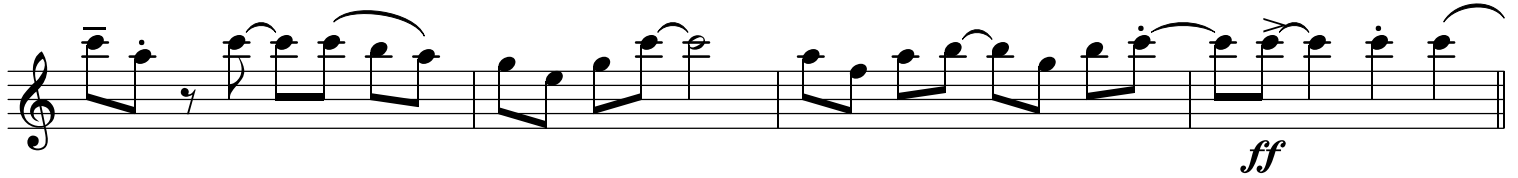
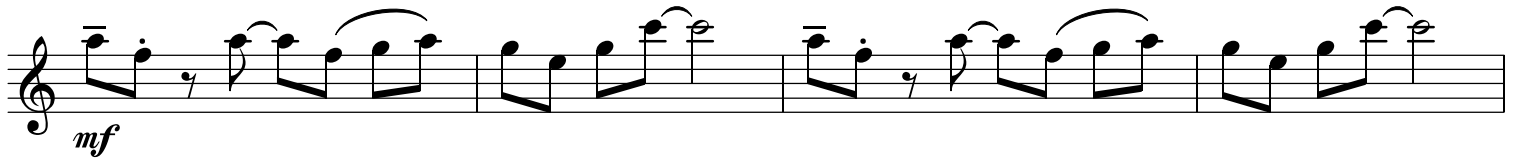
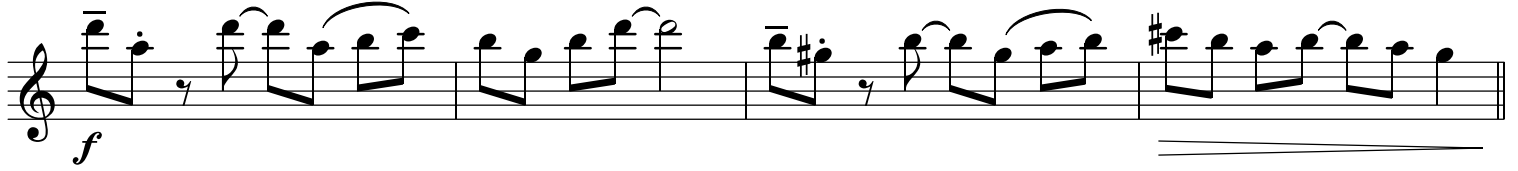
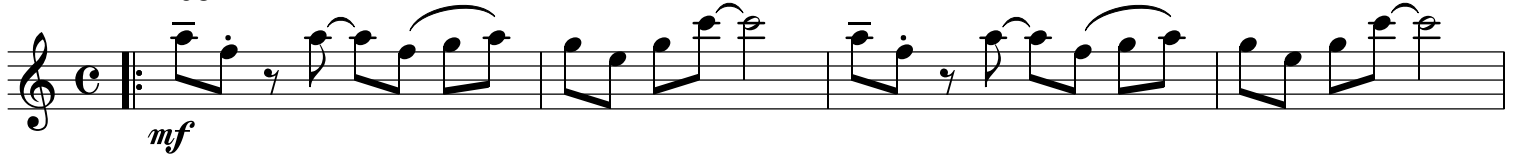


T=108





T=108





T=108

