

1. Pos. B

Eichenberger-Lied

Walzer v. Hugo Feßler

T = 182

f

Strophe
mf

Refrain
f

Zwischenteil
f

f

D.S.
al O - O

1. Pos. C

Eichenberger-Lied

Walzer v. Hugo Feßler

T = 182

f

Strophe

mf

Refrain

f

Zwischenteil

f

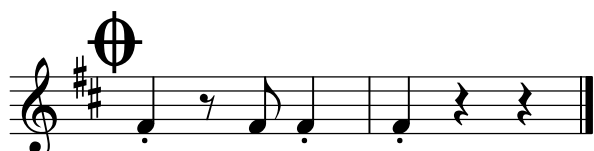
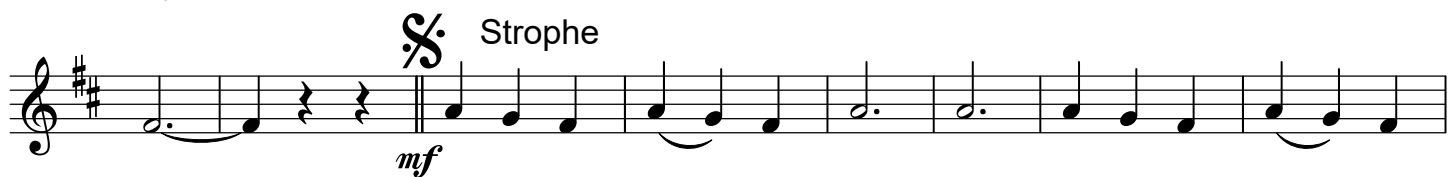
D.S.
al O - O

2. Pos. B

Eichenberger-Lied

Walzer v. Hugo Feßler

T = 182



D.S.
al O - O

T = 182

Strophe

Refrain

Zwischenteil

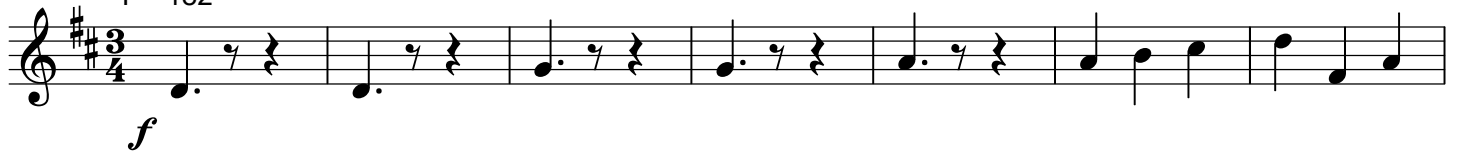
D.S.
al O - O

Tuba B

Eichenberger-Lied

Walzer v. Hugo Feßler

T = 182



Tuba C

Eichenberger-Lied

Walzer v. Hugo Feßler

T = 182

f

§ Strophe

mf

Refrain

f

Zwischenteil

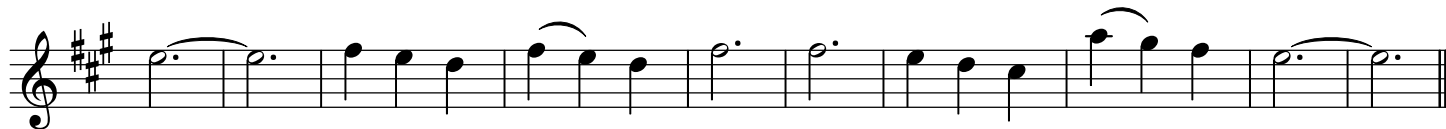
D.S.
al O - O

1. Stimme Es

Eichenberger-Lied

Walzer v. Hugo Feßler

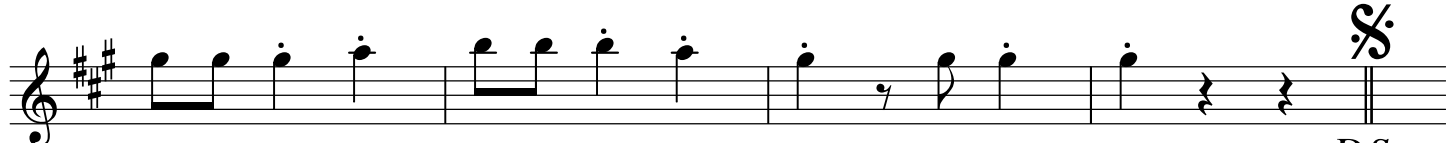
T = 182



Refrain



Zwischenteil



D.S.
al O - O



T = 182

First musical staff, treble clef, key signature of two sharps (F# and C#), 3/4 time signature. It begins with a dynamic marking of *f* (forte).

Second musical staff, treble clef, key signature of two sharps, 3/4 time signature. It starts with a repeat sign and the word "Strophe" above it. The dynamic marking is *mf* (mezzo-forte).

Third musical staff, treble clef, key signature of two sharps, 3/4 time signature.

Fourth musical staff, treble clef, key signature of two sharps, 3/4 time signature.

Fifth musical staff, treble clef, key signature of two sharps, 3/4 time signature.

Sixth musical staff, treble clef, key signature of two sharps, 3/4 time signature. It begins with the word "Refrain" above it and a dynamic marking of *mf*.

Seventh musical staff, treble clef, key signature of two sharps, 3/4 time signature.

Eighth musical staff, treble clef, key signature of two sharps, 3/4 time signature. It ends with a double bar line and a repeat sign.

Ninth musical staff, treble clef, key signature of two sharps, 3/4 time signature. It begins with the word "Zwischenteil" above it and a dynamic marking of *f*.

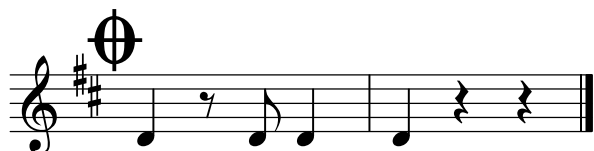
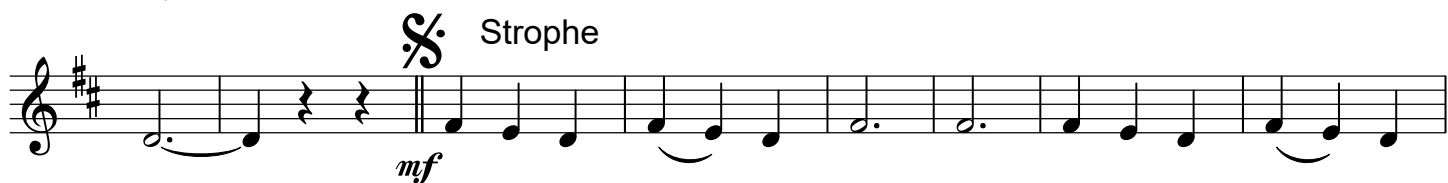
Tenth musical staff, treble clef, key signature of two sharps, 3/4 time signature.

Eleventh musical staff, treble clef, key signature of two sharps, 3/4 time signature. It ends with a double bar line and a repeat sign.

D.S.
al O - O

Twelfth musical staff, treble clef, key signature of two sharps, 3/4 time signature. It begins with a repeat sign and ends with a double bar line.

T = 182



D.S.
al O - O

Akkordeon

Eichenberger-Lied

Walzer v. Hugo Feßler / Text: Ingrid Eller

T = 182

Ich weiß ein klei - nes Dörfchen - über dem Bo - den -
 Und zieht es mich in die Ferne, kehrt' ich bald wieder zu -
 see, liegt so ver - träumt wie im Märchen und grüßt aus wei - ter Höh'.
 rück, denn bei dir bin ich so gerne. ich find' bei dir all mein Glück.
 Auf seinen sonnigen Feldern bun - te Blu - men blüh'n.
 Auf diesem Er - den - plätzchen möchte ich im - mer sein,
 In seinen schattigen Wäldern, da ist das Mo - os so grün.
 Hier hab' ich mei-n lieb' Schätzchen, da bin ich nie mehr al - lein.
 Du, mein wun - der - schönes, kleines Ei - chenberg, du
 Sonne, du Wonne, du liegst mir stets im Sinn. -
 Du, mein wun - der - schönes, kleines Ei - chenberg, du
 Freud' meiner Jugend, wo ich zu Hause bin. **Zwischenteil**
 bin.
 bin.
 D.S. al O - O