

1. Trompete B

# Träumerei

Slow v. Hugo Feßler

M = 90

1 *p*

2 *mf*

3 *p*

4 *mf*

5 *p*

6 *mf*

7 *p*

unisono

2. Trompete B

# Träumerei

Slow v. Hugo Feßler

M = 90

1 *p*

2 *mf*

3 *p*

4 *mf*

5 *p*

6 *mf*

7 *p*

unisono

M = 90

Tuba C

# Träumerei

Slow v. Hugo Feßler

1 *p*

2 *mf*

3 *p*

4 *mf*

5 *p*

6 *mf*

7 *p*

Detailed description: This block contains the first seven measures of the Tuba C part. The music is in bass clef with a key signature of one flat (B-flat) and a common time signature (C). The tempo is marked 'M = 90' and the style is 'Slow'. The score includes dynamic markings: *p* (piano) at measures 1, 3, 5, and 7; and *mf* (mezzo-forte) at measures 2, 4, and 6. There are also hairpins indicating crescendos and decrescendos. Measure numbers 1 through 7 are placed above the staves.

M = 90

Tuba B

# Träumerei

Slow v. Hugo Feßler

1 *p*

2 *mf*

3 *p*

4 *mf*

5 *p*

6 *mf*

7 *p*

Detailed description: This block contains the first seven measures of the Tuba B part. The music is in treble clef with a key signature of one sharp (F#) and a common time signature (C). The tempo is marked 'M = 90' and the style is 'Slow'. The score includes dynamic markings: *p* (piano) at measures 1, 3, 5, and 7; and *mf* (mezzo-forte) at measures 2, 4, and 6. There are also hairpins indicating crescendos and decrescendos. Measure numbers 1 through 7 are placed above the staves.

Posaune B

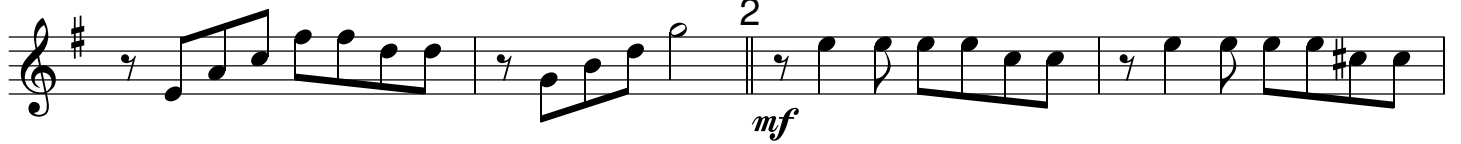
# Träumerei

Slow v. Hugo Feßler

M = 90

weich

1



Posaune C

# Träumerei

Slow v. Hugo Feßler

M = 90

weich

1

First staff of music, starting with a *p* dynamic marking.

Second staff of music.

Third staff of music, starting with a *mf* dynamic marking and a section labeled '2'.

Fourth staff of music.

Fifth staff of music, starting with a *p* dynamic marking and a section labeled '3'.

Sixth staff of music.

Seventh staff of music, starting with a *mf* dynamic marking and a section labeled '4'.

Eighth staff of music, starting with a *p* dynamic marking and a section labeled '5'.

Ninth staff of music.

Tenth staff of music, ending with a *mf* dynamic marking.

Eleventh staff of music, starting with a section labeled '6'.

Twelfth staff of music, starting with a *p* dynamic marking and a section labeled '7'.

Thirteenth staff of music.

Fourteenth staff of music, ending with a *rit.* marking and a fermata.