

3. Stimme B

# Freundschaft

Weise v. Hugo Feßler

T = 80

rit. bei Fine

1. 2.

D.S. al Fine (mit Wied.)

The musical score for voice B is written in treble clef, 3/4 time, and B-flat major. It begins with a tempo marking of T = 80 and a repeat sign. The first line contains the initial melody. The second line features a first ending bracket. The third line contains a second ending bracket with the instruction 'rit. bei Fine'. The fourth line includes first and second endings, with a double bar line and repeat sign at the end, followed by the instruction 'D.S. al Fine (mit Wied.)'.

Eigenverlag: hugo.fessler@bregenz.net

3. Stimme C

# Freundschaft

Weise v. Hugo Feßler

T = 80

rit. bei Fine

1. 2.

D.S. al Fine (mit Wied.)

The musical score for voice C is written in bass clef, 3/4 time, and B-flat major. It begins with a tempo marking of T = 80 and a repeat sign. The first line contains the initial melody. The second line features a first ending bracket. The third line contains a second ending bracket with the instruction 'rit. bei Fine'. The fourth line includes first and second endings, with a double bar line and repeat sign at the end, followed by the instruction 'D.S. al Fine (mit Wied.)'.

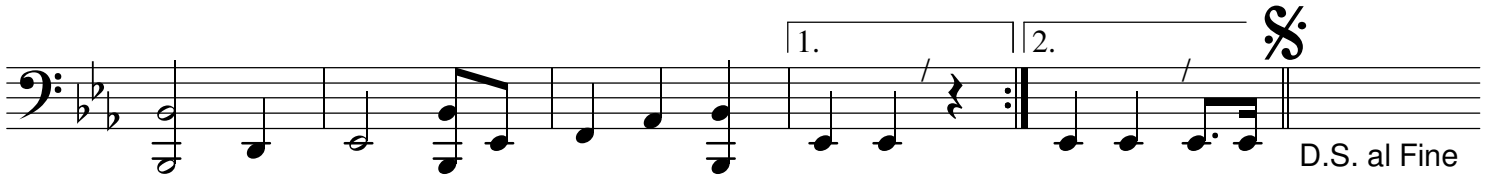
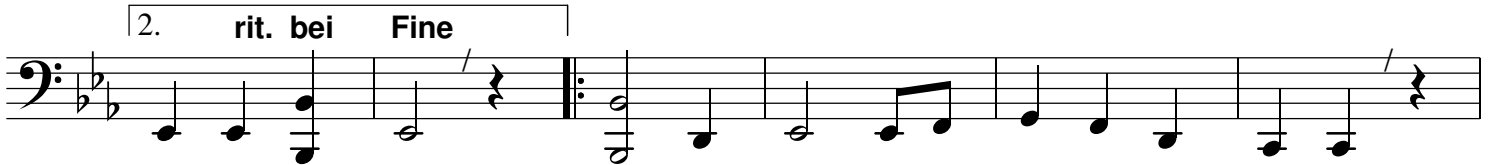
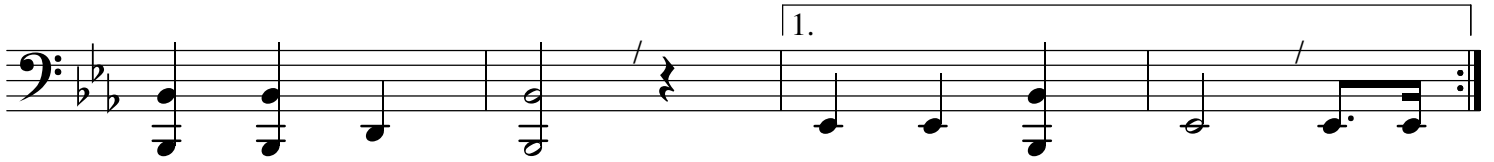
Eigenverlag: hugo.fessler@bregenz.net

Tuba C

# Freundschaft

Weise v. Hugo Feßler

T = 80



D.S. al Fine  
(mit Wied.)

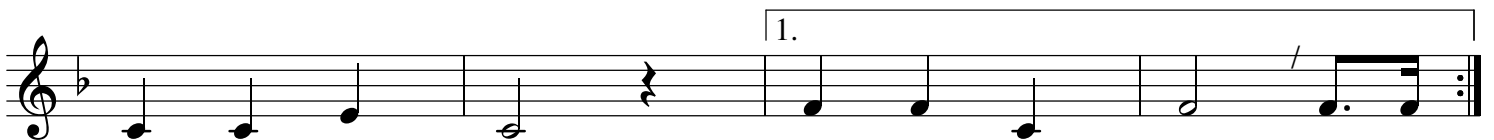
Eigenverlag: hugo.fessler@bregenz.net

Tuba B

# Freundschaft

Weise v. Hugo Feßler

T = 80



D.S. al Fine  
(mit Wied.)

Eigenverlag: hugo.fessler@bregenz.net

1. Stimme B

# Freundschaft

Weise v. Hugo Feßler

T = 80

The musical score for the first voice part is written on four staves. It begins with a treble clef, a key signature of one flat (B-flat), and a 3/4 time signature. The tempo is marked 'T = 80'. The first staff contains the initial melody, including a repeat sign and a trill. The second staff continues the melody with a trill and a first ending bracket. The third staff features a second ending bracket with the instruction 'rit. bei Fine' and ends with a double bar line. The fourth staff shows a first ending bracket, a second ending bracket, and concludes with a double bar line and a repeat sign. Below the fourth staff, the text 'D.S. al Fine (mit Wied.)' is written.

D.S. al Fine  
(mit Wied.)

Eigenverlag: hugo.fessler@bregenz.net

2. Stimme B

# Freundschaft

Weise v. Hugo Feßler

T = 80

The musical score for the second voice part is written on four staves. It begins with a treble clef, a key signature of one flat (B-flat), and a 3/4 time signature. The tempo is marked 'T = 80'. The first staff contains the initial melody, including a repeat sign and a trill. The second staff continues the melody with a trill and a first ending bracket. The third staff features a second ending bracket with the instruction 'rit. bei Fine' and ends with a double bar line. The fourth staff shows a first ending bracket, a second ending bracket, and concludes with a double bar line and a repeat sign. Below the fourth staff, the text 'D.S. al Fine (mit Wied.)' is written.

D.S. al Fine  
(mit Wied.)

Eigenverlag: hugo.fessler@bregenz.net