

3. Stimme B
(f. Quartett)

Leise, ganz leise

Weihnachtslied v. Hugo Feßler

T 80

Musical score for voice part 3, consisting of four staves of music in 3/4 time. The first staff begins with a treble clef, a 3/4 time signature, and a repeat sign. The first measure is marked with a piano (*p*) dynamic. The melody features eighth and quarter notes with various rests and slurs. The second staff continues the melody, marked with a mezzo-forte (*mf*) dynamic. The third staff returns to a piano (*p*) dynamic. The fourth staff concludes the piece with a double bar line and repeat dots.

Eigenverlag: hugo.fessler@bregenz.net

4. Stimme B
(f. Quartett)

Leise, ganz leise

Weihnachtslied v. Hugo Feßler

T 80

Musical score for voice part 4, consisting of four staves of music in 3/4 time. The first staff begins with a treble clef, a 3/4 time signature, and a repeat sign. The first measure is marked with a piano (*p*) dynamic. The melody is primarily composed of quarter and eighth notes. The second staff continues the melody, marked with a mezzo-forte (*mf*) dynamic. The third staff returns to a piano (*p*) dynamic. The fourth staff concludes the piece with a double bar line and repeat dots.

Eigenverlag: hugo.fessler@bregenz.net

3. Stimme C
(f. Quartett)

Leise, ganz leise

Weihnachtslied v. Hugo Feßler

T 80

p

mf

p

Musical score for the 3rd voice part (C) of the song 'Leise, ganz leise'. It consists of four staves of music in bass clef, 3/4 time, and B-flat major. The first staff starts with a repeat sign and a dynamic marking of *p*. The second staff has a dynamic marking of *mf*. The third staff has a dynamic marking of *p*. The fourth staff ends with a double bar line and repeat dots.

Eigenverlag: hugo.fessler@bregenz.net

4. Stimme C
(f. Quartett)

Leise, ganz leise

Weihnachtslied v. Hugo Feßler

T 80

p

mf

p

Musical score for the 4th voice part (C) of the song 'Leise, ganz leise'. It consists of four staves of music in bass clef, 3/4 time, and B-flat major. The first staff starts with a repeat sign and a dynamic marking of *p*. The second staff has a dynamic marking of *mf*. The third staff has a dynamic marking of *p*. The fourth staff ends with a double bar line and repeat dots.

Eigenverlag: hugo.fessler@bregenz.net

3. Stimme F
(f. Quartett)

Leise, ganz leise

Weihnachtslied v. Hugo Feßler

T 80

Musical score for voice part 3 (F) in 3/4 time, key of B-flat major. The score consists of four staves. The first staff begins with a repeat sign and a dynamic marking of *p*. The second staff has a dynamic marking of *mf*. The third staff has a dynamic marking of *p*. The fourth staff ends with a double bar line and repeat dots.

Eigenverlag: hugo.fessler@bregenz.net

4. Stimme C tief
(f. Quartett)

Leise, ganz leise

Weihnachtslied v. Hugo Feßler

T 80

Musical score for voice part 4 (C tief) in 3/4 time, key of B-flat major. The score consists of four staves. The first staff begins with a repeat sign and a dynamic marking of *p*. The second staff has a dynamic marking of *mf*. The third staff has a dynamic marking of *p*. The fourth staff ends with a double bar line and repeat dots.

Eigenverlag: hugo.fessler@bregenz.net

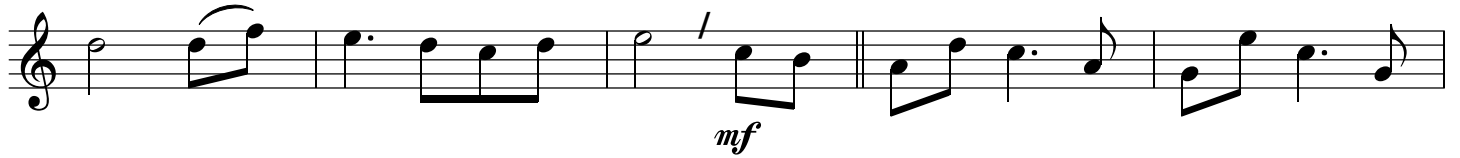
1. Stimme B *Leise, ganz leise* Weihnachtslied v. Hugo Feßler

T 80

Lei - se, ganz lei - se, kommt mit - ten in der Nacht beim - hel - len Mon - den -



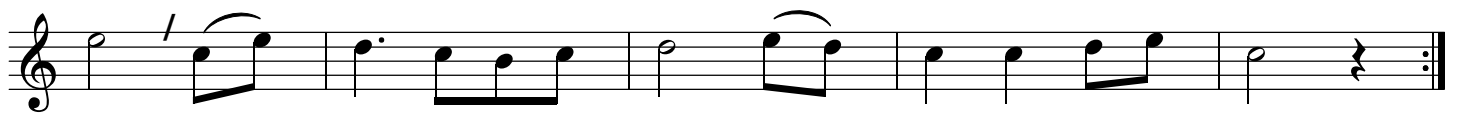
schein das - Christ - kind zu dir heim. Wenn du ganz tief schläfst und von ihm träumst, dann



legt es dir Ge - schen - ke hin. Lei - se, ganz lei - se, geht mit - ten in der



Nacht beim - hel - len Mon - den - schein das - Christ - kind wie - der heim.



Eigenverlag: hugo.fessler@bregenz.net

2. Stimme B *Leise, ganz leise* Weihnachtslied v. Hugo Feßler

T 80



Eigenverlag: hugo.fessler@bregenz.net