

T=108



Direktion B

Blues for Sarah

v. Hugo Feßler

1. Trp. *mf*

2. Trp. *mf*

1.+3. Pos. *mf*

2. Pos. *mf*

Tuba C *mf*

f

f

mf

mf

mf

mf

mf

mf

mf

ff

ff

ff

System 1 of the musical score. It consists of five staves. The top two staves (treble clef) have a melody with dynamics *mf*. The third and fourth staves (treble clef) have accompaniment with dynamics *ff*. The bottom staff (bass clef) has a bass line with dynamics *mf* and *ff*.

System 2 of the musical score. It consists of five staves. The top two staves (treble clef) have a melody with dynamics *mf*. The third and fourth staves (treble clef) have accompaniment with dynamics *ff*. The bottom staff (bass clef) has a bass line with dynamics *ff* and *mf*.

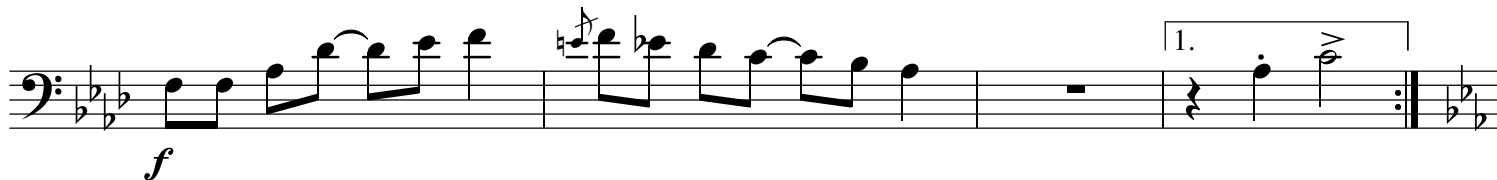
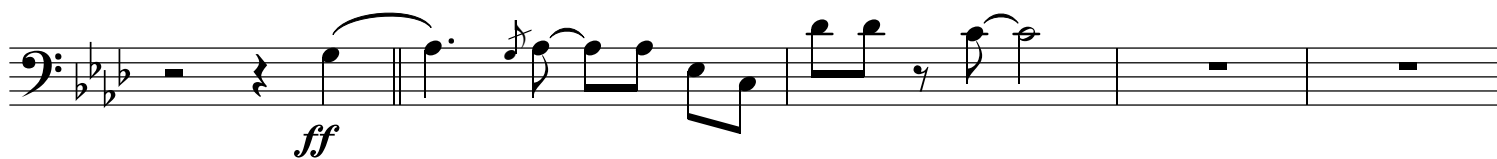
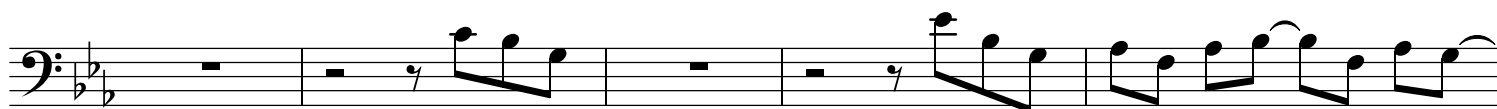
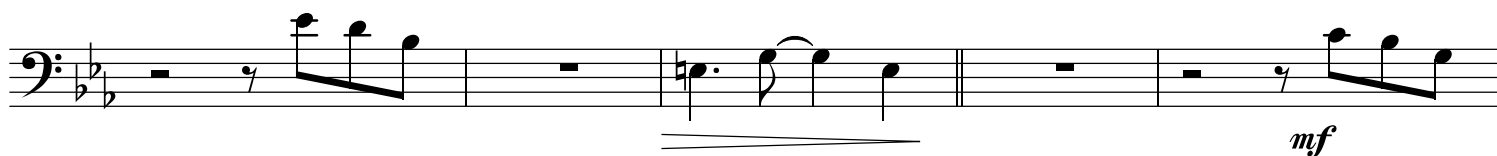
System 3 of the musical score. It consists of five staves. The top two staves (treble clef) have a melody with dynamics *f*. The third and fourth staves (treble clef) have accompaniment with dynamics *f*. The bottom staff (bass clef) has a bass line with dynamics *f*. A first ending bracket is present at the end of the system.

System 4 of the musical score. It consists of five staves. The top two staves (treble clef) have a melody with dynamics *f*. The third and fourth staves (treble clef) have accompaniment with dynamics *f*. The bottom staff (bass clef) has a bass line with dynamics *f*. A second ending bracket is present at the beginning of the system.

Blues for Sarah

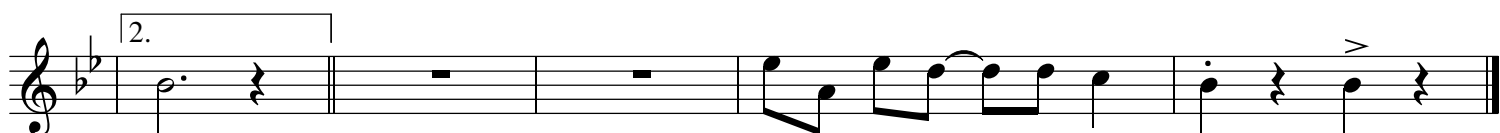
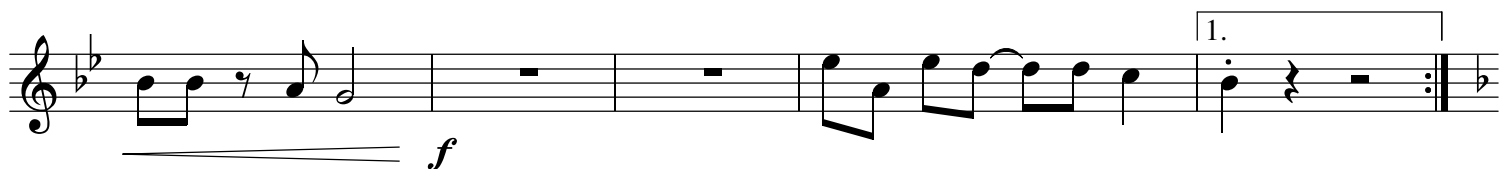
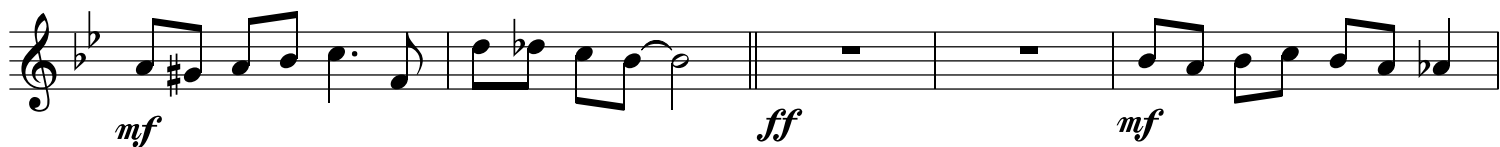


T=108



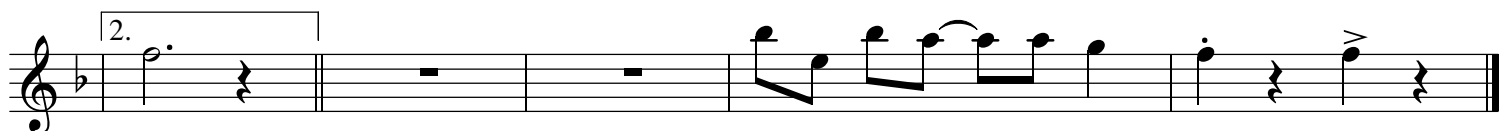
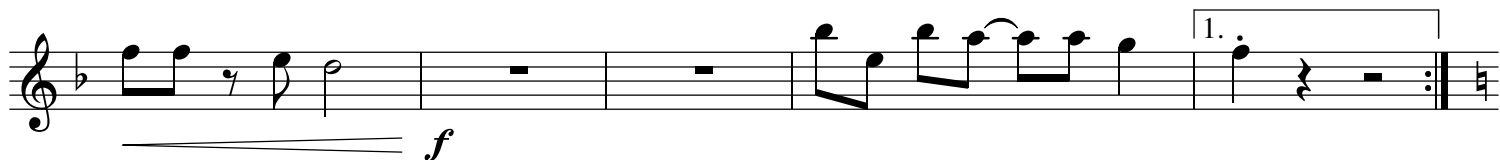
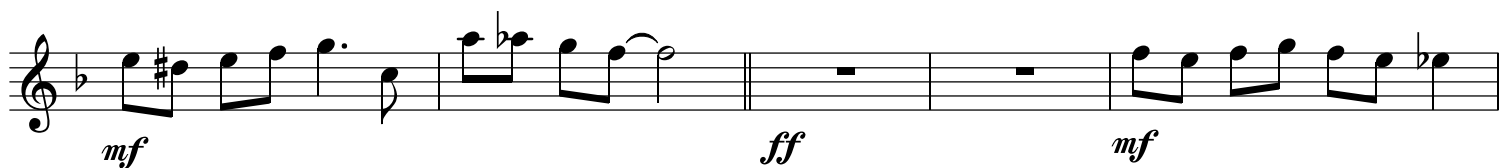
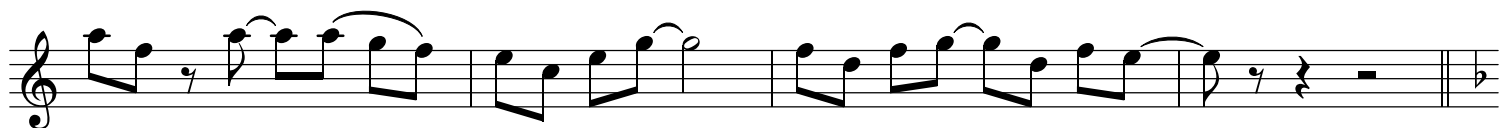
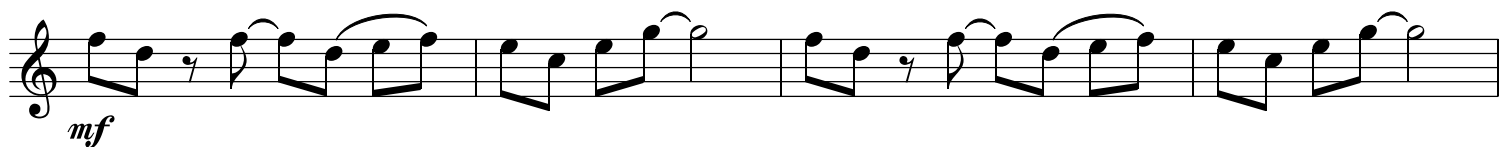
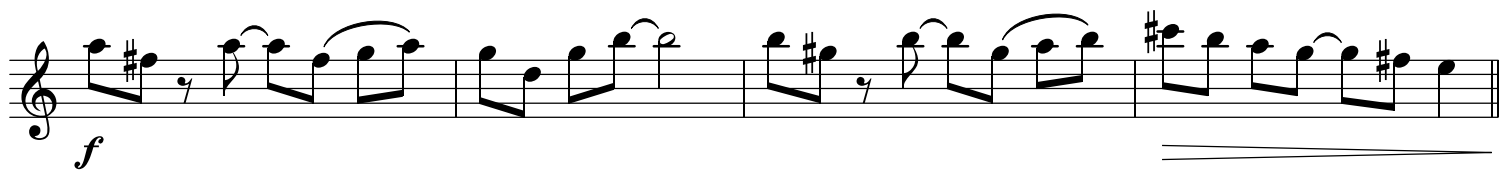
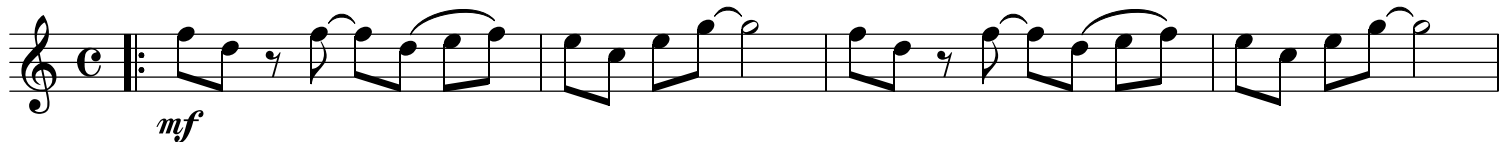


T=108



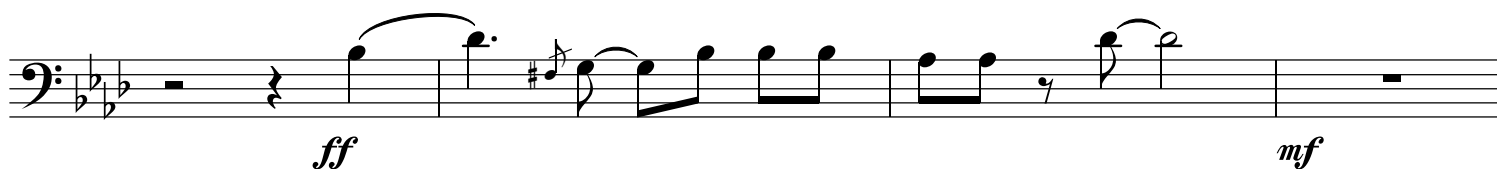
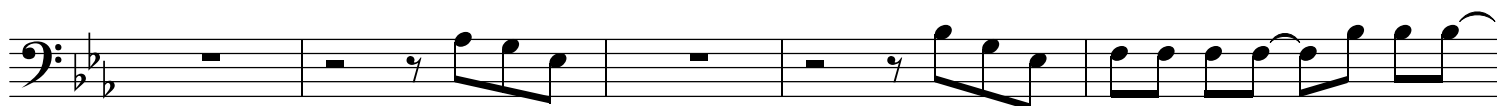
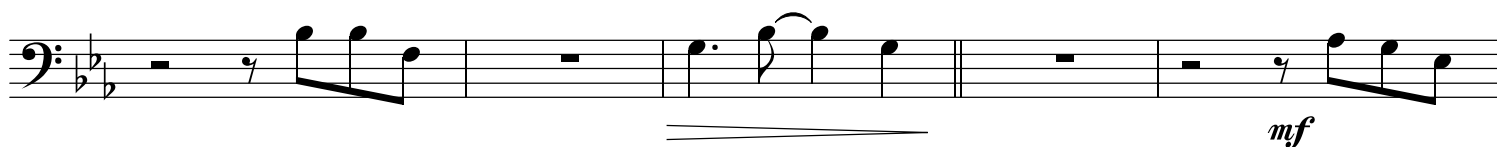


T=108



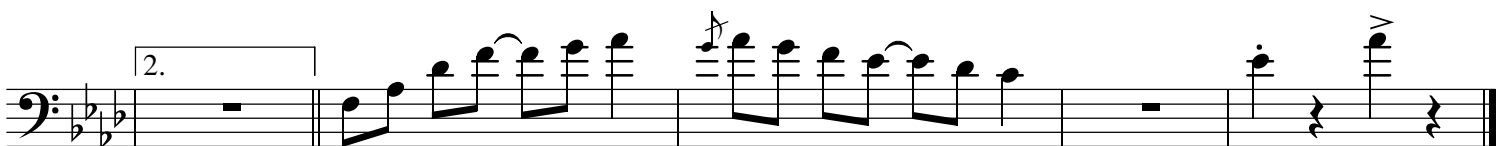
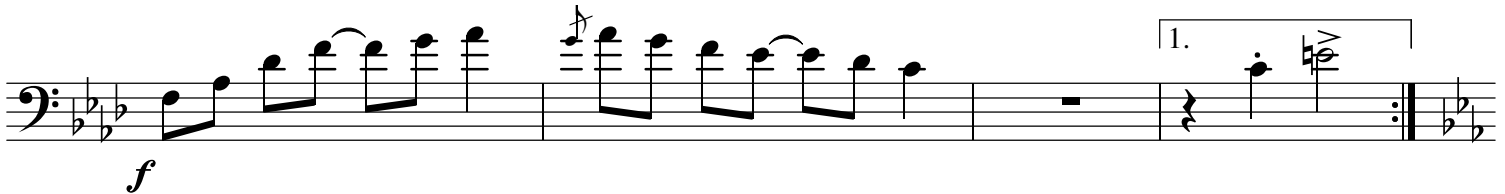
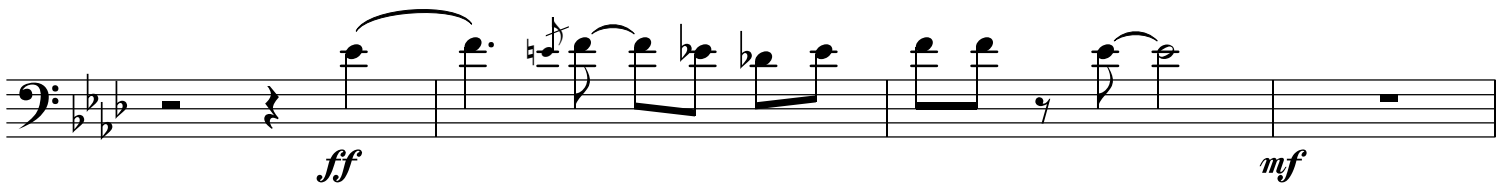
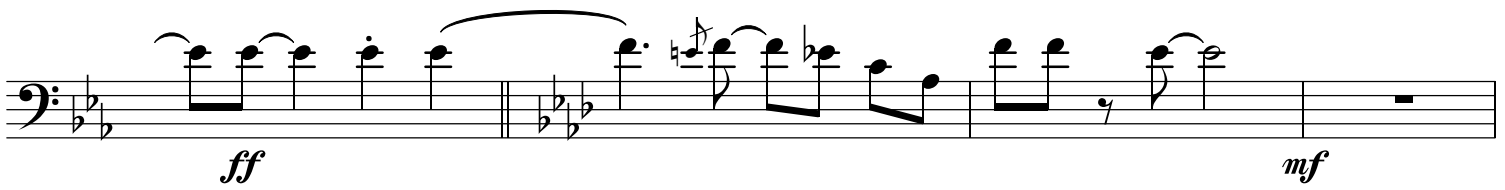
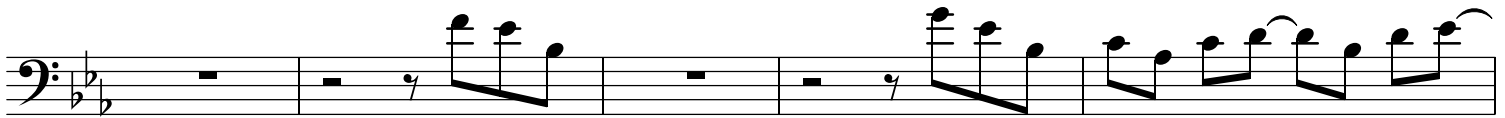
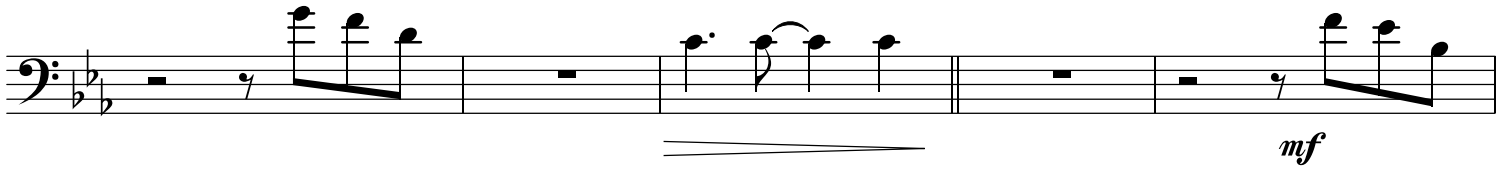


T=108



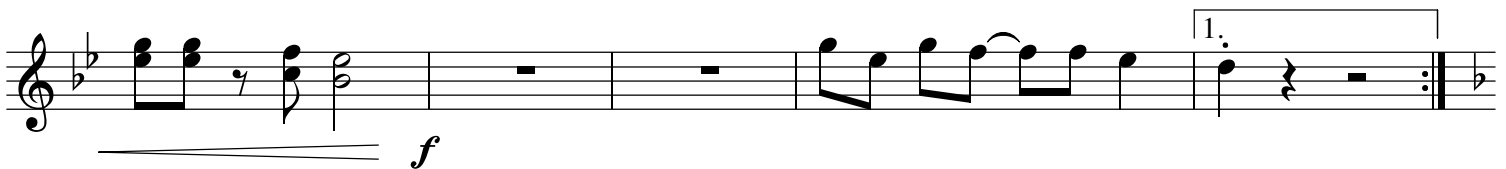
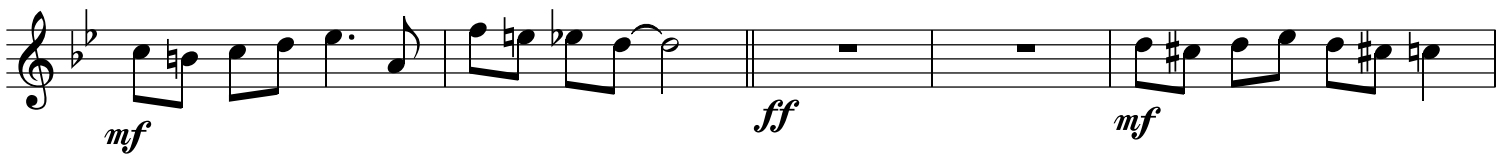
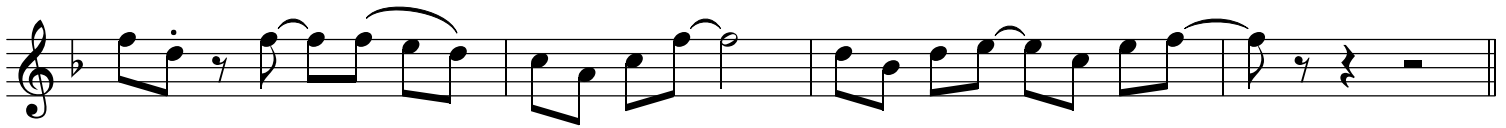
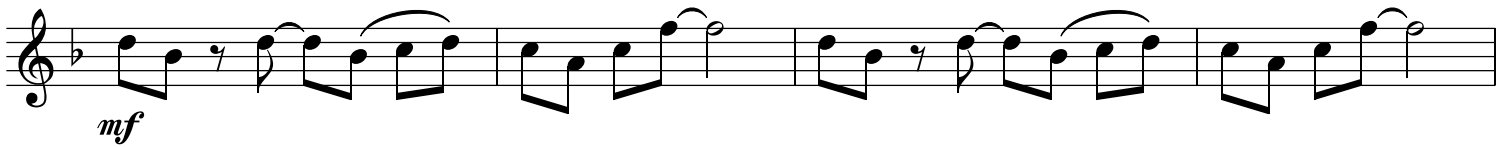
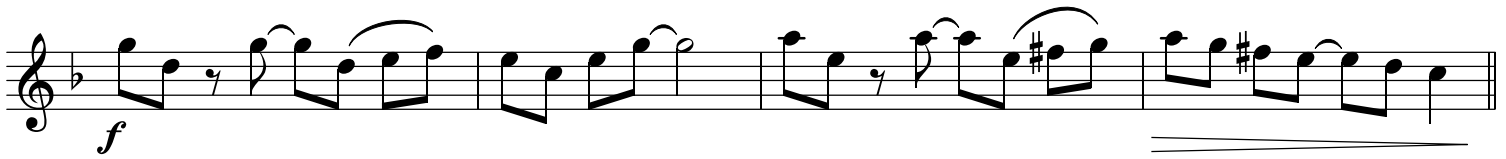


T=108





T=108



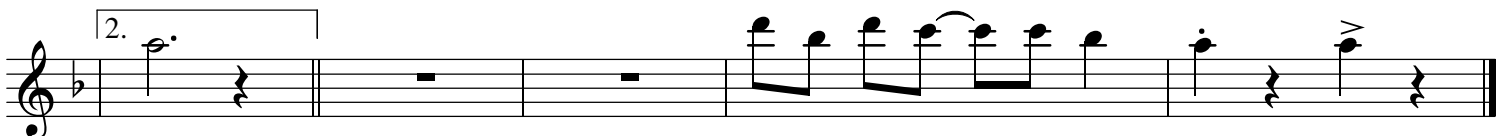
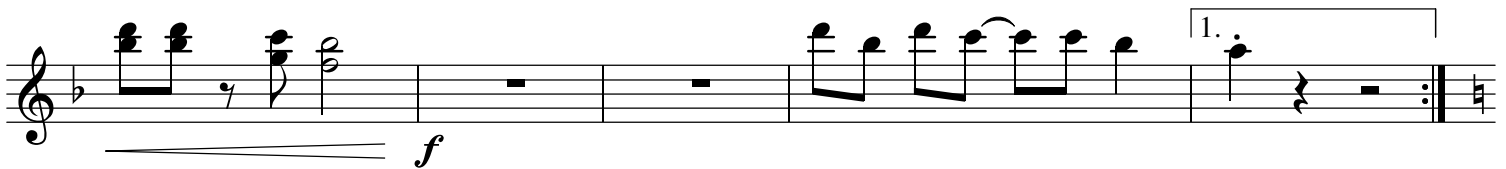
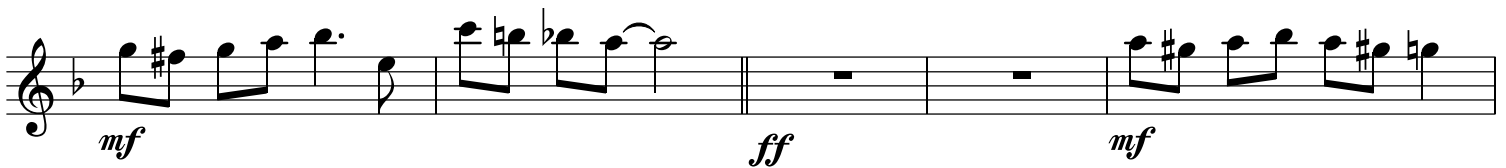
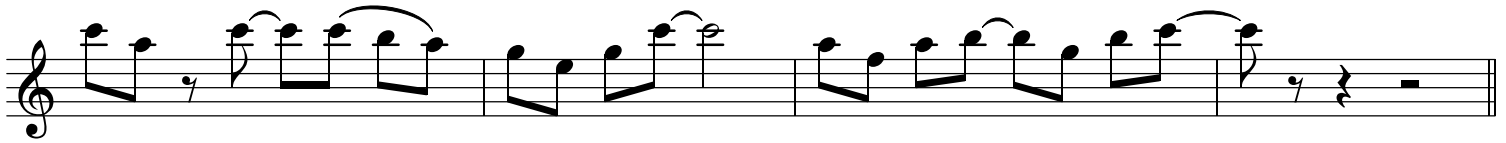
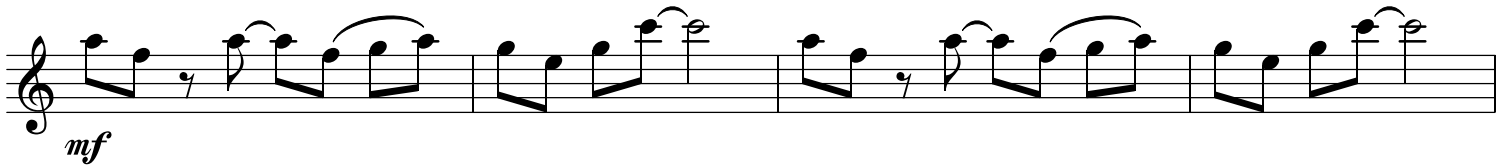
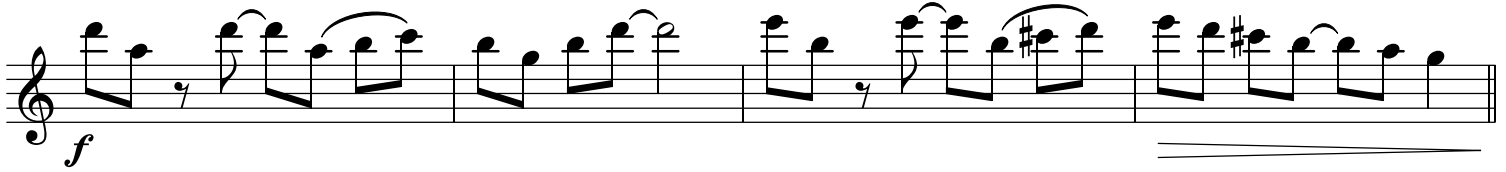
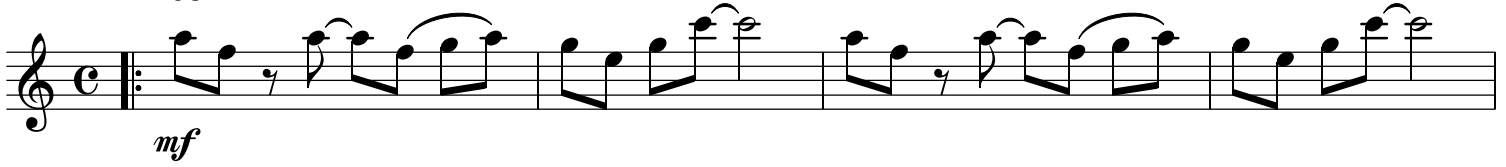
1. Tromp. in Es

Blues for Sarah

v. Hugo Feßler



T=108



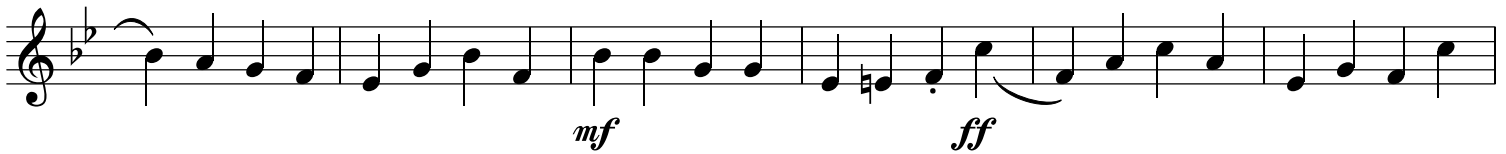
Tuba B

Blues for Sarah

v. Hugo Feßler

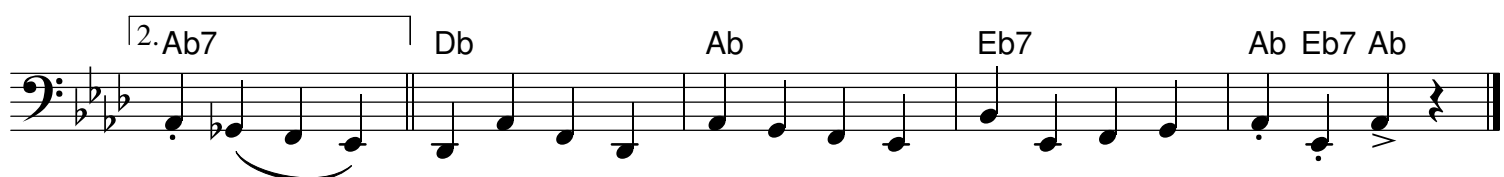
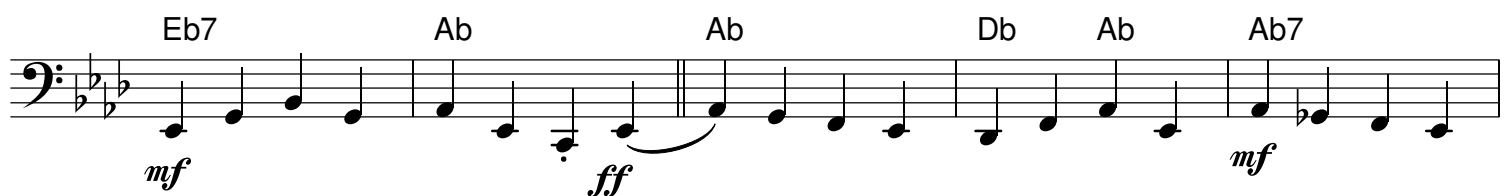
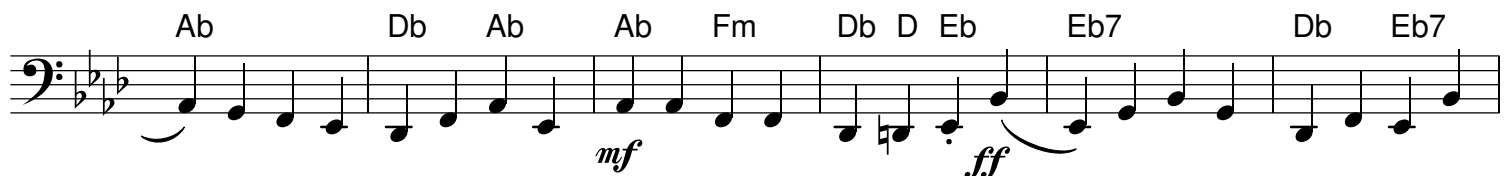
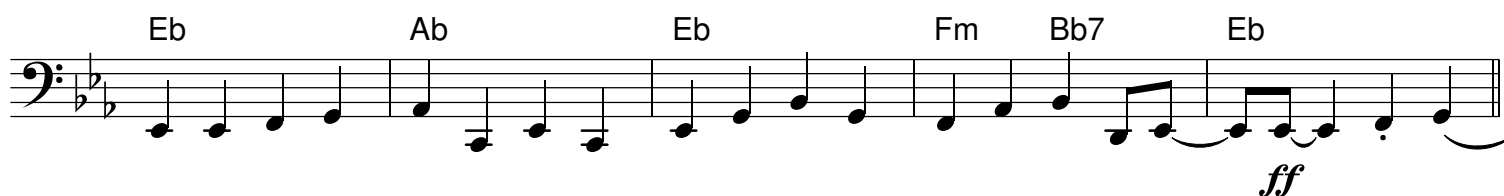
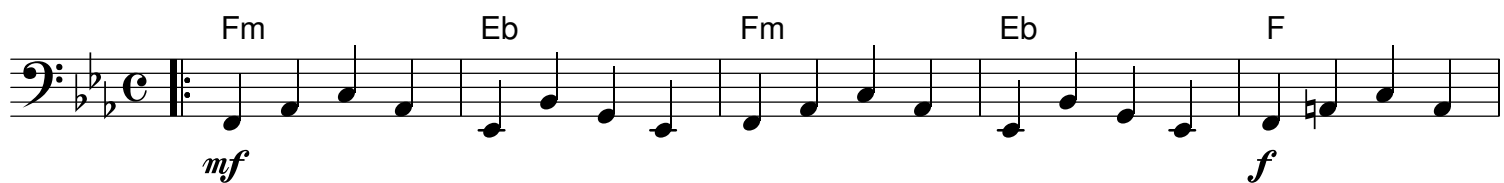


T=108





T=108



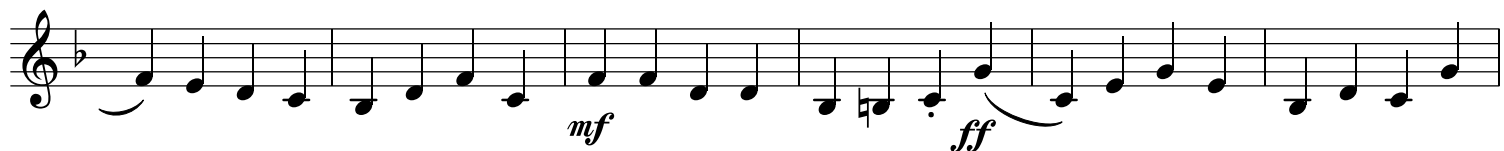
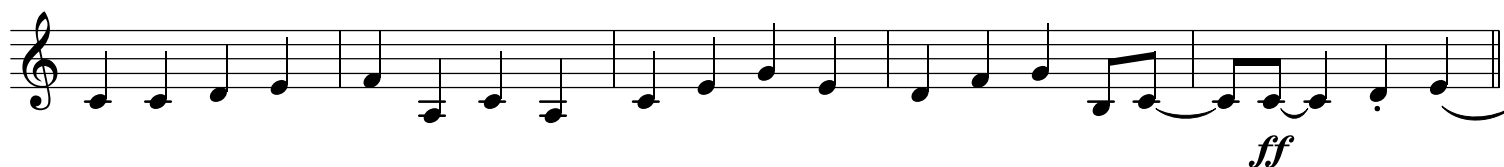
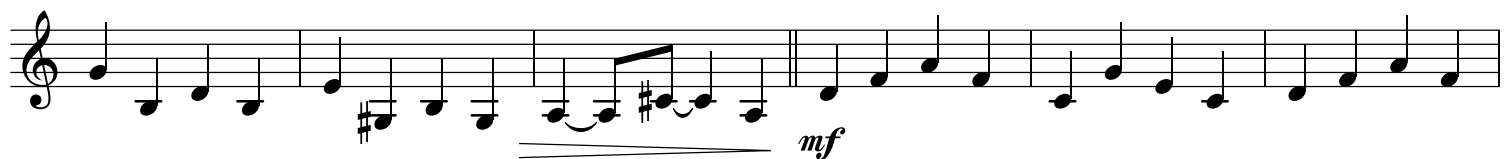
Tuba Es

Blues for Sarah

v. Hugo Feßler

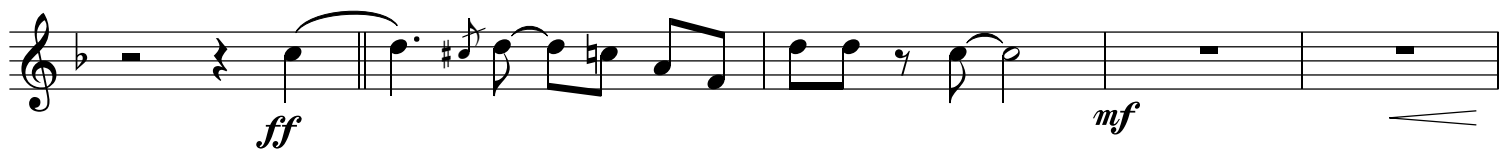
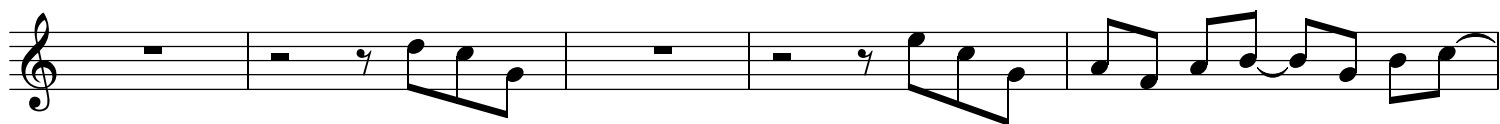
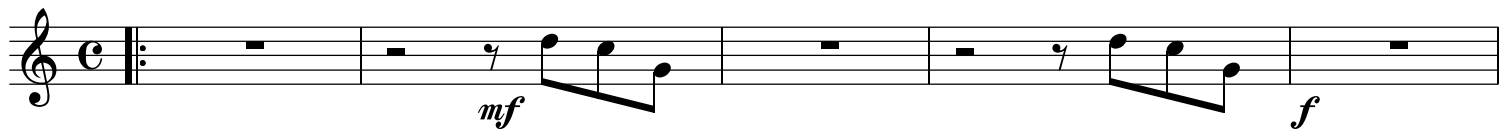


T=108





T=108



T=108

mf

f

mf

ff

(Pos.)

mf

ff *mf*

ff *mf*

f

1.

2.