

Akkordeon

Eichenberger-Lied

Walzer v. Hugo Feßler / Text: Ingrid Eller

T = 182

Ich weiß ein klei - nes Dörfchen - über dem Bo - den -
 Und zieht es mich in die Ferne, kehrt' ich bald wieder zu -
 see, liegt so ver - träumt wie im Märchen und grüßt aus wei - ter Höh'.
 rück, denn bei dir bin ich so gerne. ich find' bei dir all mein Glück.
 Auf seinen sonnigen Feldern bun - te Blu - men blüh'n.
 Auf diesem Er - den - plätzchen möchte ich im - mer sein,
 In seinen schattigen Wäldern, da ist das Mo - os so grün.
 Hier hab' ich mei-n lieb' Schätzchen, da bin ich nie mehr al - lein.
 Du, mein wun - der - schönes, kleines Ei - chenberg, du
 Sonne, du Wonne, du liegst mir stets im Sinn. -
 Du, mein wun - der - schönes, kleines Ei - chenberg, du
 Freud' meiner Jugend, wo ich zu Hause bin. **Zwischenteil**
 bin.
 bin.
 D.S. al O - O

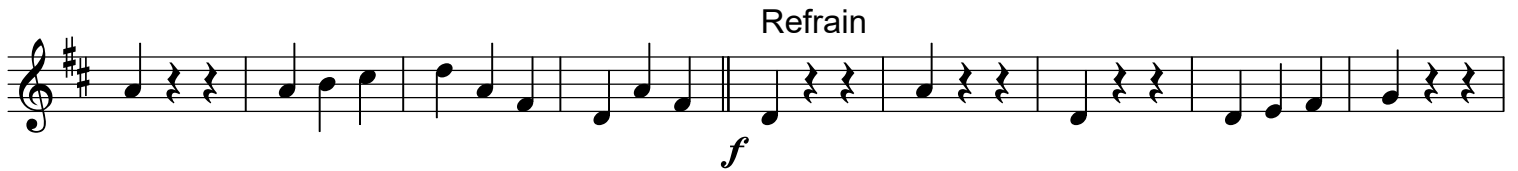
Bariton B

Eichenberger-Lied

Walzer v. Hugo Fessler

T = 182

§ Strophe



D.S.
al O - O

Klar. B

Eichenberger-Lied

Walzer v. Hugo Feßler

T = 182

First musical staff, treble clef, key signature of two sharps (F# and C#), 3/4 time signature. It begins with a dynamic marking of *f* (forte).

Second musical staff, treble clef, key signature of two sharps, 3/4 time signature. It starts with a repeat sign and the word "Strophe" above it. The dynamic marking *mf* (mezzo-forte) is placed below the staff.

Third musical staff, treble clef, key signature of two sharps, 3/4 time signature.

Fourth musical staff, treble clef, key signature of two sharps, 3/4 time signature.

Fifth musical staff, treble clef, key signature of two sharps, 3/4 time signature.

Refrain

Sixth musical staff, treble clef, key signature of two sharps, 3/4 time signature. It begins with a dynamic marking of *f* (forte).

Seventh musical staff, treble clef, key signature of two sharps, 3/4 time signature.

Eighth musical staff, treble clef, key signature of two sharps, 3/4 time signature. It ends with a double bar line and a repeat sign.

Zwischenteil

Ninth musical staff, treble clef, key signature of two sharps, 3/4 time signature. It begins with a dynamic marking of *f* (forte).

Tenth musical staff, treble clef, key signature of two sharps, 3/4 time signature.

Eleventh musical staff, treble clef, key signature of two sharps, 3/4 time signature. It ends with a double bar line and a repeat sign.

D.S.
al O - O

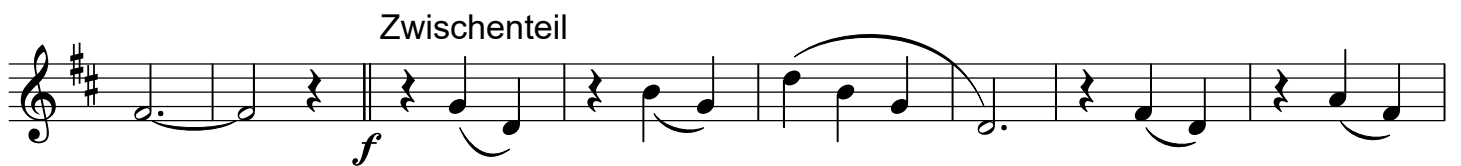
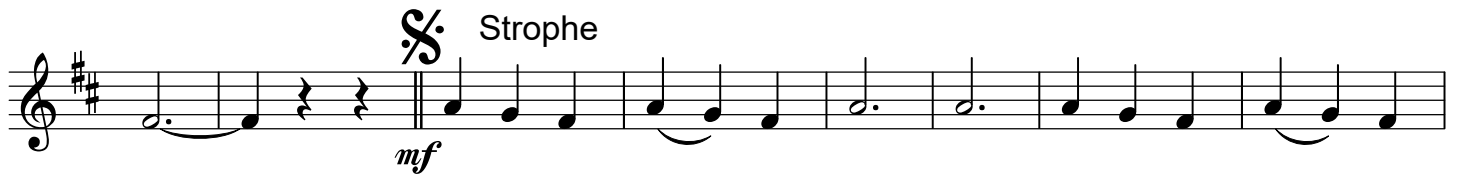
Twelfth musical staff, treble clef, key signature of two sharps, 3/4 time signature. It begins with a repeat sign.

Tromp. B

Eichenberger-Lied

Walzer v. Hugo Feßler

T = 182



D.S.
al O - O

